

Gorkha Municipality

A Short Profile

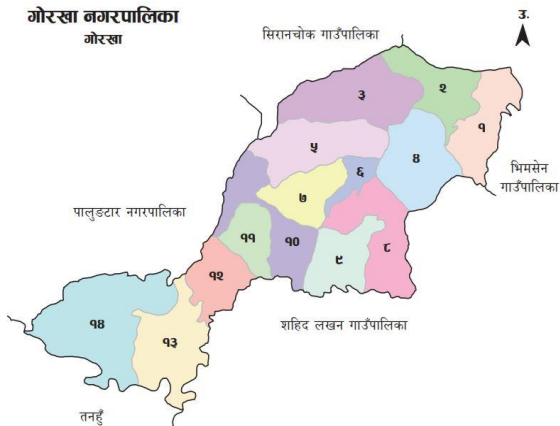


Publisher:

**Gorkha Municipality
Dumridanda, Gorkha**

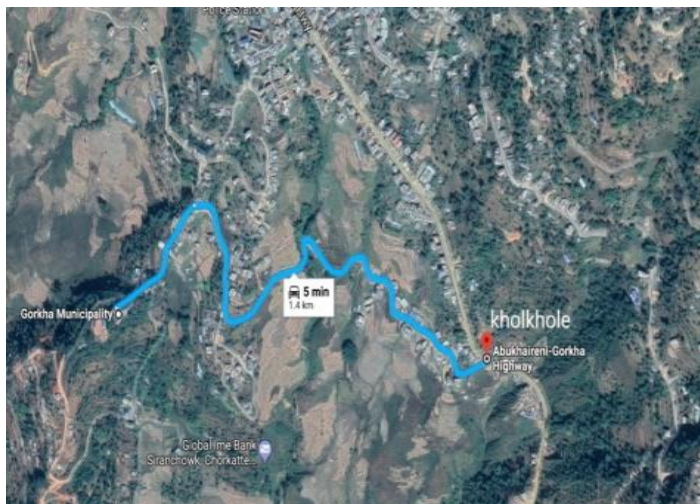
URL: www.gorkhamun.gov.np

**Email: gorkhamun@gmail.com
info@gorkhamun.gov.np**



GORKHA MUNICIPALITY A SHORT PROFILE 2075 B.S

Location of Municipality Office:



Designations:

Mayor:

Name: Rajan Raj Panta

Phone: 9856040338

Work: 064-420431



Deputy Mayor:

Name: Bina Kumari Shrestha

Phone: 9856075067

Work: 064-420432



Chief Administrative Officer:

Name: Pradip Raj Adhikari

Phone: 9856018111

Work: 064-420696



Municipality Introduction:

Residing approximately at the middle portion of map of **nepal**, **gorkha municipality** is only historic place of **gorkha** district as a part of province 4. It was established in Magh 15, 2053 BS including **gorakhkali**, **raniswara** and **taranagar** VDCs. According to the decision of Nepal government in Mangsir 16, 2071 BS; **finam** and **nareswor** and according to decision of Mangsir 20, 2073 BS; **taple** and **deurali** were added leaving it to total area of 131.86 sq.km.

It is located at 141 **km's** from the capital Kathmandu and 24 **km's** from **aanbu-khaireni**, **tanahun**. Most of the place of **gorkha municipality** is equipped with hills and some region is plain in geography. Gorkha Municipality is enrich in its geographical aspects. A wide range of mountains(Manaslu, **himchuli**, **larke**, **bouddha mountain**) is easily visible from Kuduntar, 13**kilo** market, **maidan**, **paslang**, **satipipal**, **gorakhkali durbar**, **upallo-kot**, **bhimsen smarak**, etc.

Historical background:

Also known as **gorkha** in the world, **gorkha** has its own proud identity in the pages of world history. Unification of Nepal by Prithivi Narayan Shah was the historic moment in the history of Nepal. Gorkha Durbar, Gorakhnath temple, **kalika temple**, **tallo durbar** which symbolize historic identity all lie here in this municipality. **Bishey Nagarchi**, **who helped the then king Prithivi Narayan Shah in collecting donations for unification efforts**, was also born in this municipality.

Boundary:

East: **sahid lakhan** and **bhimsen rural municipality**

West: **Palungtar rural municipality**

North: **siranchowk rural municipality**

South: **sahid lakhan rural municipality and aanbu-khaireni Rural Municipality of tanahun district**

Geography:

Latitude (it must be latitude): $27^{\circ} 56'03''$ north to $28^{\circ} 13'07''$ north

Longitude : 84.23 east to 84.38 east

height : 328M to 1522M

Weather:

Average temperature (maximum) – 30° centigrade

Average temperature (minimum) – 14° centigrade

Average rainfall -1492 mm.

Political and administrative details:

Province no.: 4

District: **gorkha**

Election area: 2

Municipality: **gorkha municipality**

No. of wards: 14

Main rivers:

Marsyangdi, daraundi

Small streams: **sirdi, ludi, karne** river, **gyadul** river, **gagate** river, **beni** river

Ward division (as of 2068 population census)

Ward no.	Included VDC	Previous ward	Population

1	Taple	6,7,8,9	2148
2	Taple	1,2,3,4,5	2368
3	Gorkha	14,15	3692
4	Gorkha	12,13	3097
5	Gorkha	4	2851
6	Gorkha	1,3	7295
7	Gorkha	2,5	4834
8	Gorkha	6,7	5608
9	Gorkha	8	4453
10	Gorkha	9	2848
11	Gorkha	10	3235
12	Gorkha	11	2741
13	Deurali	5,6,7,8	3263
14	Deurali	1,2,3,4,9	2251

Wardwise population (as of 2068 population census)

Ward no.	Male	Female	Total	Households/ family
1	928	1220	2148	547
2	1017	1351	2368	575
3	1563	2129	3692	1026
4	1309	1788	3097	766
5	1271	1580	2851	663
6	3575	3720	7295	2083
7	2134	2700	4834	1350
8	2535	3073	5608	1600
9	2373	2080	4453	991

10	1300	1548	2848	707
11	1465	1770	3235	739
12	1242	1499	2741	677
13	1454	1809	3263	858
14	995	1256	2251	564

Religious places:

Religious places

Gorakhkali temple

Gorakhnath cave

Birim kali temple

Lower museum

Chaughera palace

Radhaballeswor temple

Sitapaila temple

Krishna temple

Hanumandhoka

Bhimsen smarak

Bindabasini

Thulo aagan

Rameshwor temple

Namrung devi temple

Paschhimkali temple

Bishnu panchayan

Khadga devi temple

Raniban saraswati temple

Tourism destinations: Gorkha Palace

Places

Gorakhnath cave

Ramshah chautara

Gorakhkali temple

Ganesh sthan

Sittal pati

Rangmahal

Rotpani

Pandit pati

Pashupati guhweswori

Chaughera bhawan

Bidhyabhagwati temple

Hanuman bhanjyang

Saraswati temple

Shivapariwar statue

Siddha paila

Chandi bhanjyang

Bajrabhairab temple

Gorkha Museum (lower palace):

It is located at **gorkha municipality** ward no. 6, **pokarithok, thulo aagan**. Previously it was **diversified (it must be spread)** to an area of 6 ropanies but today it is **dirversified (it must be spread)** to 70 ropanies, after puratatwik bibhag took the duty to look after it. The palace is of **pagoda** style and spreads to 30*30 sq. m. the palace is equipped with different historic significant windows, doors, gods and goddess and you could see 60 varieties of flowers. The palace was designed and constructed by Amar Chitrakaar in 2048 B.S.

Population:

Household	Male	Female	Total
13146	23161	27523	50684

Education:

Organization	Governmental	Private
Campus	1	1
Child development center	49	17
Basic School (1...3)	17	3
Basic School (1...5)	14	5
Basic School (1-8)	5	4
Secondary (1...10)	4	6
Higher secondary (1-12)	12	1
Community development center	3	0

Population according to religion:

Religion	Population census 2068 BS	
	Number	Percentage
Hindu	44482	87.76
Buddhist	2235	4.41
Islam	1579	3.12
Christian	2295	4.53
Kirat	9	0.02
Prakriti	18	0.04
Others	6	0.01

Population according to major caste/ethnicity:

Caste/ Ethnicity	Population census 2068 BS	
	population	percentage
Gurung	3452	6.81
Brahmin	6492	12.85
Chhetri	10763	21.24
Magar	7823	15.43
Newar	4467	8.81
Sarki	4985	9.83
Kami	2883	5.69

Tamang	1253	2.47
Kumal	2340	4.62

Communication/entertainment:

Details	Number
Post office	
Library	1
Movie theatre	1
Cable Television	1
Registered Newspapers	3
Registered F.M Radio	5
Cyber	4
Courier	3
Playground	2

FM Radio Station:

F.M Radio	Frequency	Phone
Choice FM	90.4	064420599
Radio Gorkha	92.8	064421390
Radio Manaslu	103.9	064421484
Gorakhkali FM	93.6	064421568
Matribhumi FM	98.2	064421364

Road Details:

Road Type	Unit	fiscal year 073/074
Total length of road	Km	594
Pitch road	Km	42

Gravel	Km	42
Erthen Road	Km	510

Health organizations details:

Type of health institution	number
Government hospital (district hospital)	1
Community hospital	1
Health Center	6
Community Health Center	1
Dental Health Center	2
Ayurvedic Health Center	1
Private Hospital	5
Village clinic	43
Vaccination Center	43
Urban Health Center	7
Technical Training Center	3

Cleanliness and waste management

Type	Number
Tractor	1
Truck	1
Daily Wastage Generation from households	6 ton
Dumping Site	1
Public Toilet	4

Telephone Service

Service Type	Number
PSTN telephone	1840
Mobile Postpaid Sim	800
Mobile Prepaid Sim	8000
CDMA Rim	1000
CDMA Fixed Phone	1070
ADSL Internet	550

Household Details

Details	Household	
	Number	Percent
Own	9701	73.90
Rental	3089	23.653
Organizational	164	1.25
Others	173	1.32

Household details according to source of drinking water

Drinking Water Source	Household	
	Number	Percent
Pipeline	5614	42.77
Tubewell	10	0.08
Organized Well	128	0.98
Unorganized Well	518	3.95
Main pipeline	6772	51.59
River	22	0.17
Others	7	0.05
Not included	56	0.43

Household details according fuel source

Fuel Source	Household	
	Number	Percent
Wood	7404	56.40
Kerosene	65	0.50
LPG	4834	36.82
Biological Gas	722	5.50
Others	45	0.34
Not included	57	0.43

Fuel used for lighting purposes

Fuel	Household	
	Number	Percent
Electricity	12461	94.93
Kerosene	550	4.19
Bio gas	11	0.08
Others	47	0.36
Not included	58	0.44

Organizations:

Office name	Contact
District court, gorkha	420195
District Administrative Office, Gorkha	420133 /420236
Gorkha Municipality	420269

District Police Office	420199
District Co-ordination Committee office, Gorkha	420144
District Health Office	420208
Financial General Comptroller Office, Gorkha	420140
District Education Office	420105
District Agricultural Development Office	420113
District Livestock Service Office, Gorkha	421251
Office of Public Prosecutor, Gorkha	420138
Western Irrigation Development Division Office, Gorkha	420175
Department of geo-conservation, gorkha	420230
Department of forest, Gorkha	420136
Water Supply and sanitation office, Gorkha	420110

Department of Urban Development & Building Construction	420214
District Technical Office, Gorkha	420029
Bhairavi Dal Battalion, Gorkha	420319
Department of Women and Children, Gorkha	420108
District Election Office, Gorkha	420796
Malpot Office, Gorkha	420201
District Postal Office	420112
Department of Investigation and Authority, Gorkha	420165
Department of Cottage and Small Industries, Gorkha	420193
Gorkha Durbar Monitoring Unit	420188
Gorkha Museum	420145
Central Bureau of Statistics, Gorkha	420198



Gorkha Durbar



Municipality Office



Bhimsen Thapa Smriti Park



A view from Bhimsen Thapa Smriti Park



Municipal Assembly Member



Bindhyabasini Temple



Demonstration of use of Fire Brigade



Rani Pokhari



Prithivi Narayan Shah with Gorkha Durbar in background



Tallo Durbar (Gorkha Museum)

Gorkha Museum



Gorkha Museum (Tallo Durbar)



Reconstruction of Gorkha Durbar



Children Park



Paschhimkali Temple

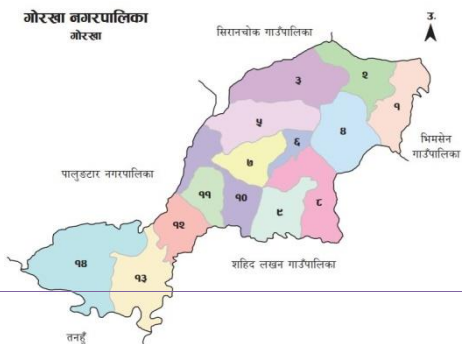


Rock Garden



Rani Ban

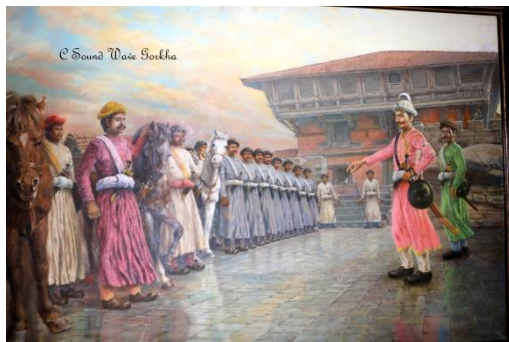
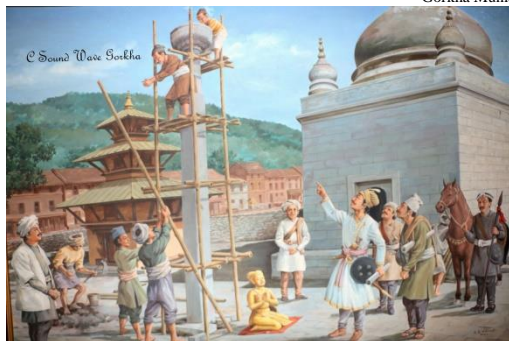
Water Source



Map of Gorkha Municipality

Some Historical Glimpses











© Sound Wave Gorkha